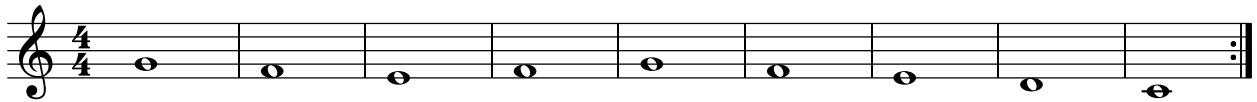


WINDY WOODWIND

Crazy Clarinet Challenge

Karen Kirkland

0 The "T" Test



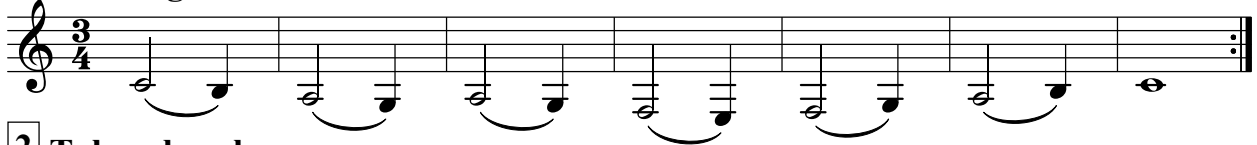
Smoothly Does It



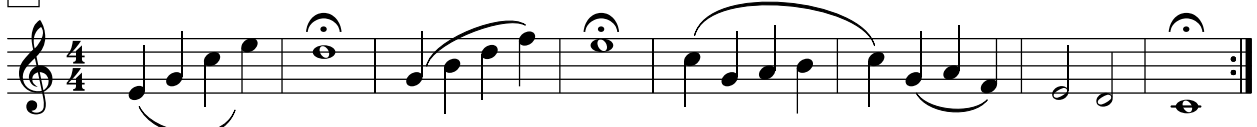
Big Breath Ayre



1 Waltzing Around



2 Take a break



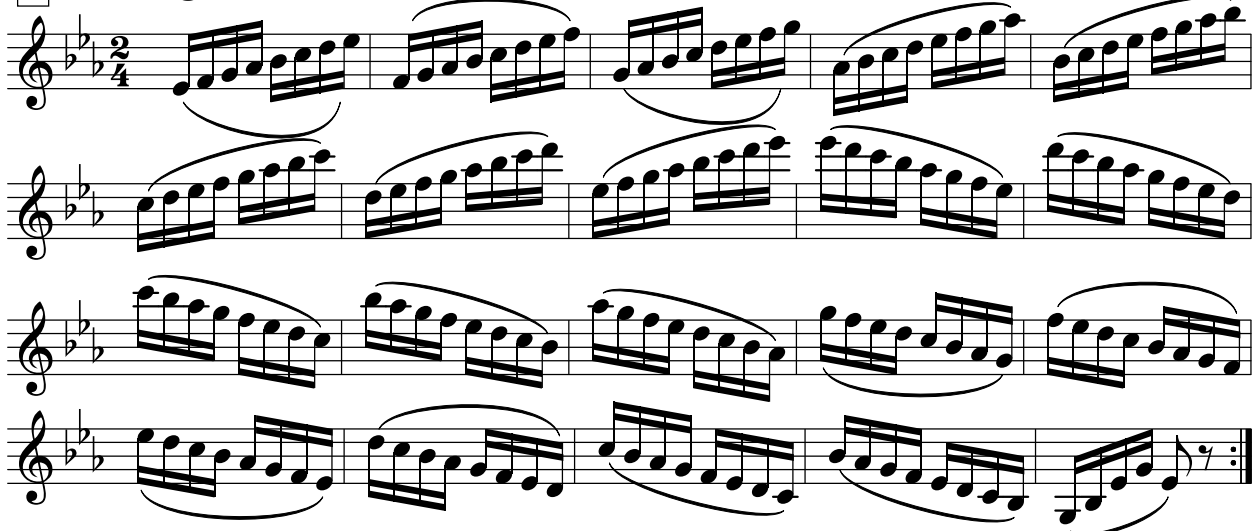
3 Skipping Staccato



4 Digit Dance



5 Flat Finger Buster



6 Sharp Finger Slide

Musical score for 'Sharp Finger Slide' in G major (one sharp) and 4/4 time. The piece consists of three staves of music. The first staff begins with a treble clef and a key signature of one sharp (F#). The melody is characterized by a series of eighth-note runs with slurs, moving upwards in pitch. The second and third staves continue this melodic pattern, with the third staff ending with a double bar line and repeat dots.

7 Climb That Mountain

Musical score for 'Climb That Mountain' in G major (one sharp) and 2/4 time. The piece consists of three staves of music. The first staff begins with a treble clef and a key signature of one sharp (F#). The melody features a mix of eighth and quarter notes, with some rests. The second and third staves continue the melody, with the third staff ending with a double bar line and repeat dots.

8 The Moon Walk - One small step for man, one giant leap for a clarinet

Musical score for 'The Moon Walk' in G major (one sharp) and 4/4 time. The piece consists of four staves of music. The first staff begins with a treble clef and a key signature of one sharp (F#). The melody is simple, using mostly quarter and half notes. The second, third, and fourth staves continue the melody, with the fourth staff ending with a double bar line and repeat dots.